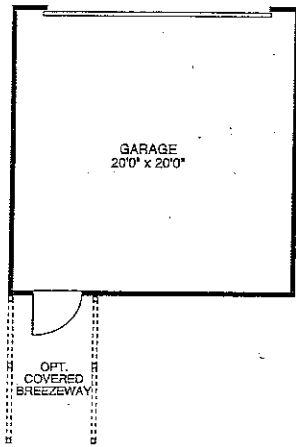
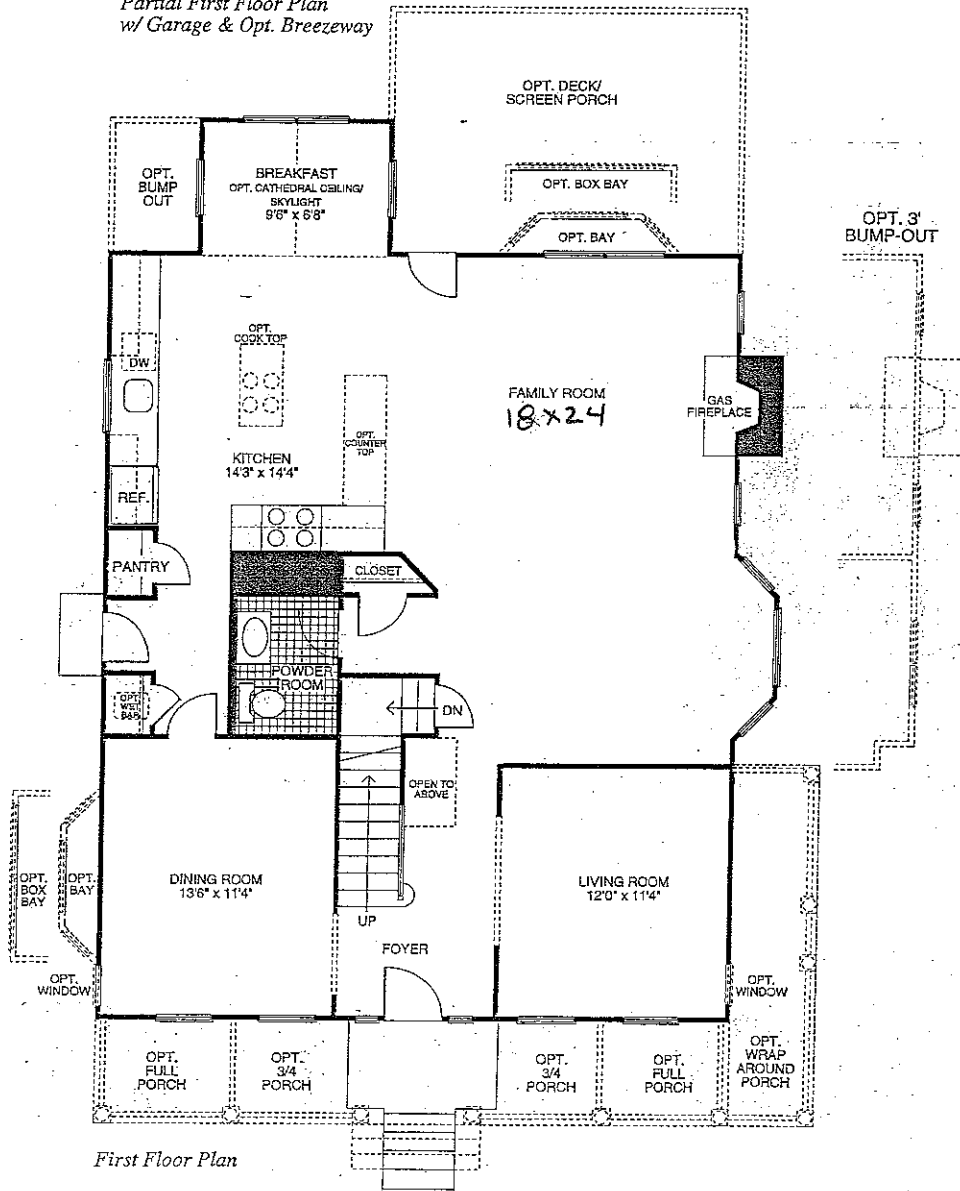


First Floor Plan



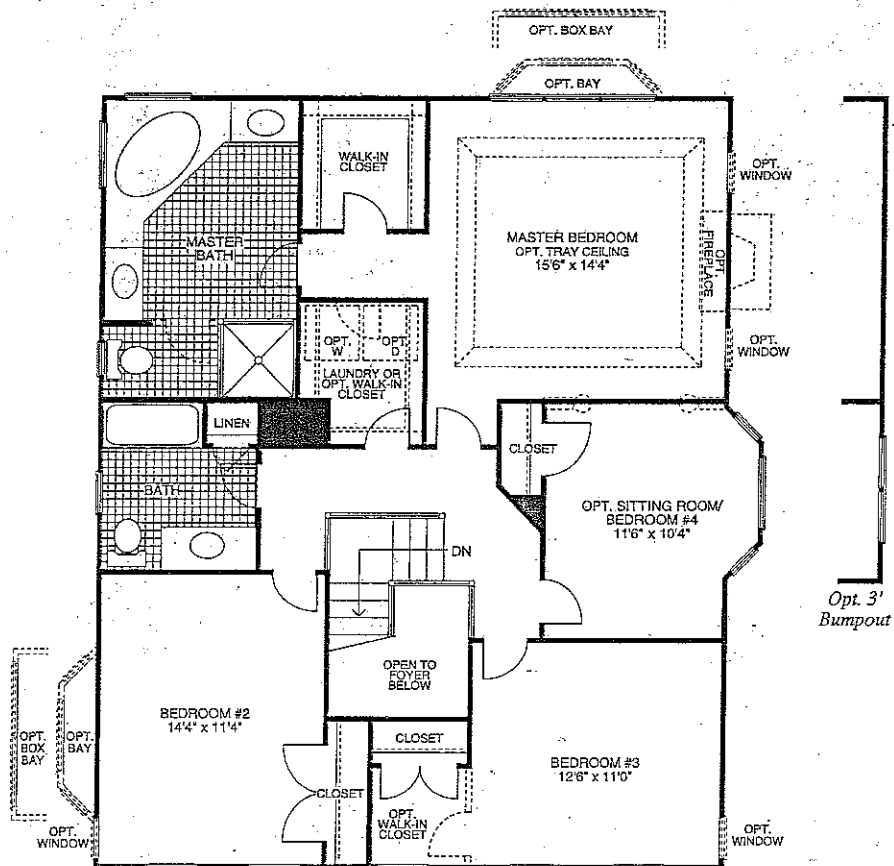
Partial First Floor Plan
w/ Garage & Opt. Breezeway



First Floor Plan



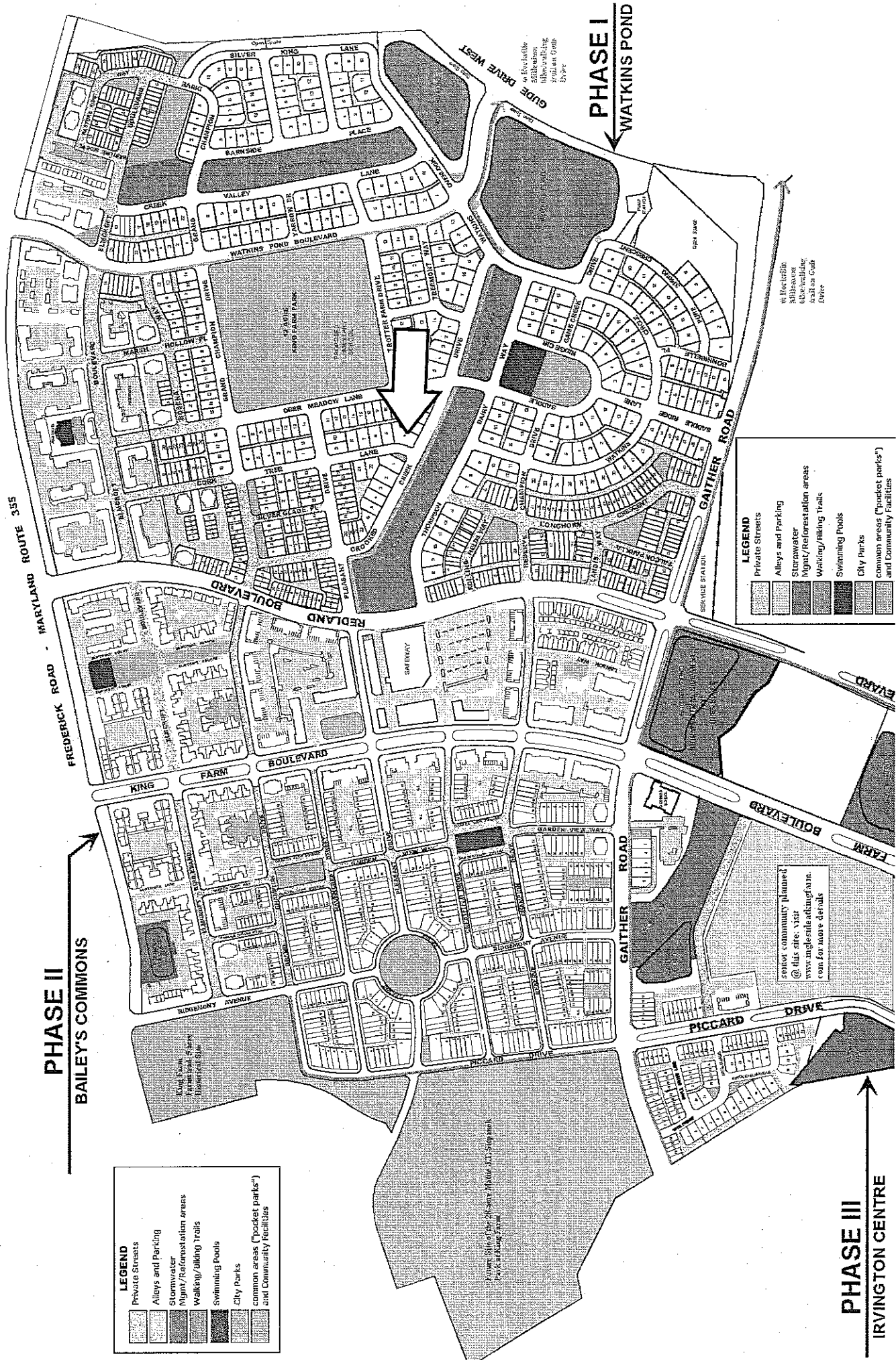
Second Floor Plan



Second Floor Plan

from plans and specifications. Subject to change without notice.





PHASE II
BAILEY'S COMMONS

PHASE I
WATKINS POND

PHASE III
IRVINGTON CENTRE

LEGEND

- Private Streets
- Alleys and Parking
- Stormwater
- Night/Recreation areas
- Walking/Hiking Trails
- Swimming Pools
- City Parks
- common areas ("pocket parks") and Community Facilities

LEGEND

- Private Streets
- Alleys and Parking
- Stormwater
- Night/Recreation areas
- Walking/Hiking Trails
- Swimming Pools
- City Parks
- common areas ("pocket parks") and Community Facilities

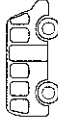
Send community plan
@ this site: visit
www.mgleniteadvising.com
for more details

to facilitate
Bike/Walking
with walking
paths and trails
Bike

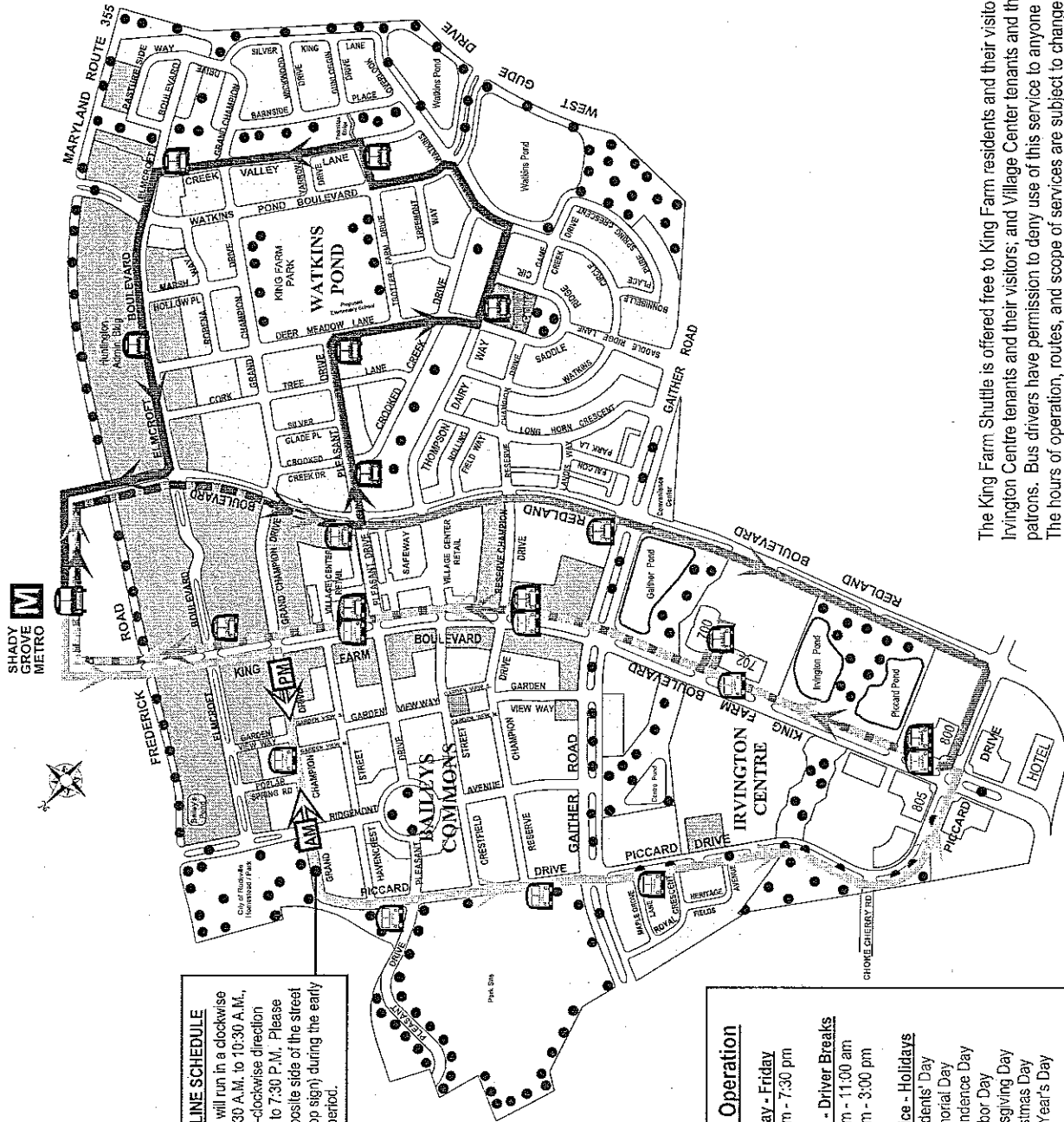
to facilitate
Bike/Walking
with walking
paths and trails
Bike

to facilitate
Bike/Walking
with walking
paths and trails
Bike

Welcome to the KING FARM SHUTTLE BUS



Continuous loop Shuttle service through King Farm to the Shady Grove Metro



ORANGE LINE SCHEDULE
 The Orange line will run in a clockwise direction from 6:30 A.M. to 10:30 A.M., and in a counter-clockwise direction from 11:00 A.M. to 7:30 P.M. Please stand on the opposite side of the street (from the bus stop sign) during the early A.M. clockwise period.

Hours of Operation
 Monday - Friday
 6:30 am - 7:30 pm
 No Service - Driver Breaks
 10:30 am - 11:00 am
 2:30 pm - 3:00 pm
 No Service - Holidays
 Presidents' Day
 Memorial Day
 Independence Day
 Labor Day
 Thanksgiving Day
 Christmas Day
 New Year's Day

BUS ROUTES and STOPS

BLUE LINE

Shady Grove Metro Station

Redland Boulevard @

- o Pleasant Drive
- o Gaither Road

King Farm Boulevard @

- o 800-805 King Farm Blvd
- o 700-702 King Farm Blvd
- o Reserve Champion Drive
- o Village Green Park
- o Elmcroft Boulevard

RED LINE

Pleasant Drive @

- o Crooked Creek Drive
- o Deer Meadow Lane

Thompson Dairy Way @

- o Saddle Ridge Circle
- o Trotter Farm Drive @

Creek Valley Lane @

- o Elmcroft Boulevard
- o Elmcroft Boulevard @

- o Huntington Admin. Bldg.
- o Shady Grove Metro Station

ORANGE LINE

Grand Champion Drive @

- o Between Garden View Way and Poplar Spring Road

Piccard Drive @

- o Pleasant Drive
- o Reserve Champion Drive
- o Royal Crescent

King Farm Boulevard @

- o 800-805 King Farm Blvd
- o 702 King Farm Blvd
- o Reserve Champion Drive
- o Village Green Park

Shady Grove Metro Station



Bus Stops



Buses are handicap accessible

Shuttle Bus Service operated by
Veolia Transportation
 Dispatcher: 703.256.4339

The King Farm Shuttle is offered free to King Farm residents and their visitors; Irvington Centre tenants and their visitors; and Village Center tenants and their patrons. Bus drivers have permission to deny use of this service to anyone else. The hours of operation, routes, and scope of services are subject to change.