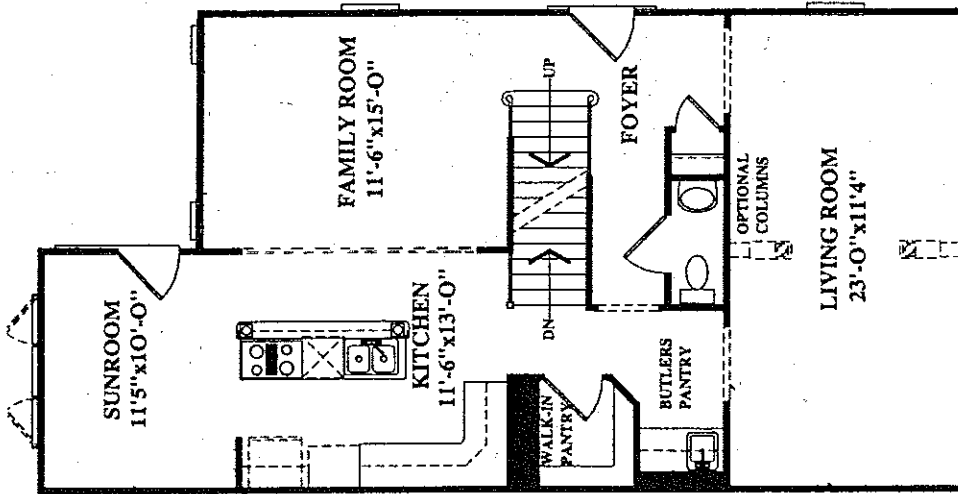
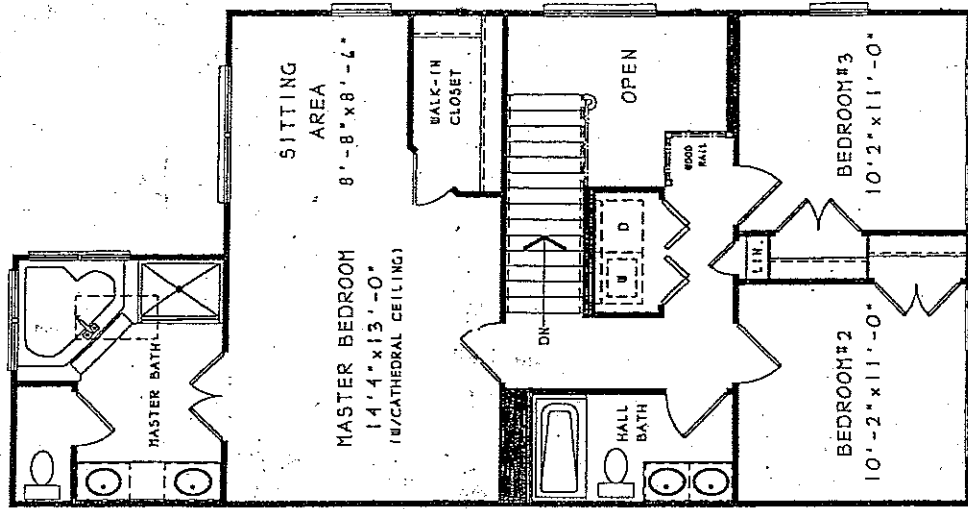


LOWER LEVEL GARAGE
W/OPT.#9340-C



FIRST FLOOR "L"
#9101-L W/OPT.#9340



SECOND FLOOR PLAN
W/OPT.#0202-A

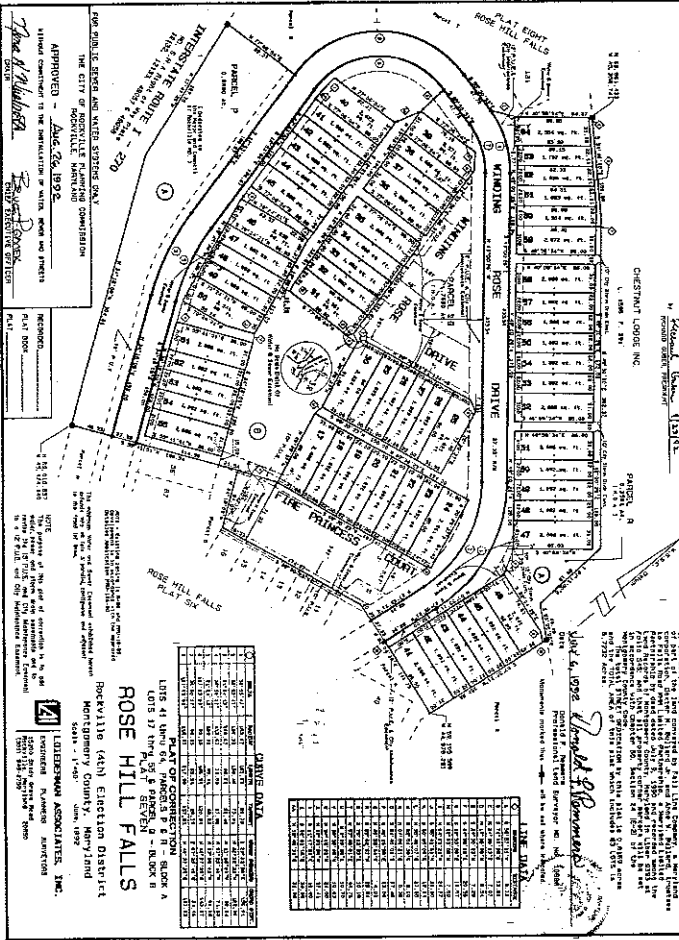
PLANNING
OWNER'S DECLARATION

The undersigned hereby certifies that the information furnished herein is true and correct to the best of his knowledge and belief, and that the same is in accordance with the facts and circumstances of the case. The undersigned further certifies that the information furnished herein is in accordance with the facts and circumstances of the case, and that the same is in accordance with the facts and circumstances of the case.

OWNER'S DECLARATION
I, James S. Knauff, being duly sworn, depose and say that the information furnished herein is true and correct to the best of my knowledge and belief, and that the same is in accordance with the facts and circumstances of the case.

PLANNING
SUPERVISOR'S CERTIFICATE

I, James S. Knauff, being duly sworn, depose and say that the information furnished herein is true and correct to the best of my knowledge and belief, and that the same is in accordance with the facts and circumstances of the case.



LOT DATA

LOT NO.	ACRES	SQ. FT.	AREA
1	0.10	4356	4356
2	0.10	4356	4356
3	0.10	4356	4356
4	0.10	4356	4356
5	0.10	4356	4356
6	0.10	4356	4356
7	0.10	4356	4356
8	0.10	4356	4356
9	0.10	4356	4356
10	0.10	4356	4356
11	0.10	4356	4356
12	0.10	4356	4356
13	0.10	4356	4356
14	0.10	4356	4356
15	0.10	4356	4356
16	0.10	4356	4356
17	0.10	4356	4356
18	0.10	4356	4356
19	0.10	4356	4356
20	0.10	4356	4356
21	0.10	4356	4356
22	0.10	4356	4356
23	0.10	4356	4356
24	0.10	4356	4356
25	0.10	4356	4356
26	0.10	4356	4356
27	0.10	4356	4356
28	0.10	4356	4356
29	0.10	4356	4356
30	0.10	4356	4356
31	0.10	4356	4356
32	0.10	4356	4356
33	0.10	4356	4356
34	0.10	4356	4356
35	0.10	4356	4356
36	0.10	4356	4356
37	0.10	4356	4356
38	0.10	4356	4356
39	0.10	4356	4356
40	0.10	4356	4356
41	0.10	4356	4356
42	0.10	4356	4356
43	0.10	4356	4356
44	0.10	4356	4356
45	0.10	4356	4356
46	0.10	4356	4356
47	0.10	4356	4356
48	0.10	4356	4356
49	0.10	4356	4356
50	0.10	4356	4356
51	0.10	4356	4356
52	0.10	4356	4356
53	0.10	4356	4356
54	0.10	4356	4356
55	0.10	4356	4356
56	0.10	4356	4356
57	0.10	4356	4356
58	0.10	4356	4356
59	0.10	4356	4356
60	0.10	4356	4356
61	0.10	4356	4356
62	0.10	4356	4356
63	0.10	4356	4356
64	0.10	4356	4356
65	0.10	4356	4356
66	0.10	4356	4356
67	0.10	4356	4356
68	0.10	4356	4356
69	0.10	4356	4356
70	0.10	4356	4356
71	0.10	4356	4356
72	0.10	4356	4356
73	0.10	4356	4356
74	0.10	4356	4356
75	0.10	4356	4356
76	0.10	4356	4356
77	0.10	4356	4356
78	0.10	4356	4356
79	0.10	4356	4356
80	0.10	4356	4356
81	0.10	4356	4356
82	0.10	4356	4356
83	0.10	4356	4356
84	0.10	4356	4356
85	0.10	4356	4356
86	0.10	4356	4356
87	0.10	4356	4356
88	0.10	4356	4356
89	0.10	4356	4356
90	0.10	4356	4356
91	0.10	4356	4356
92	0.10	4356	4356
93	0.10	4356	4356
94	0.10	4356	4356
95	0.10	4356	4356
96	0.10	4356	4356
97	0.10	4356	4356
98	0.10	4356	4356
99	0.10	4356	4356
100	0.10	4356	4356

ROSE HILL FALLS
PLANNING
SUPERVISOR'S CERTIFICATE

I, James S. Knauff, being duly sworn, depose and say that the information furnished herein is true and correct to the best of my knowledge and belief, and that the same is in accordance with the facts and circumstances of the case.

APPROVED - AUG 26, 1992
THE CITY OF ROCKVILLE PLANNING COMMISSION

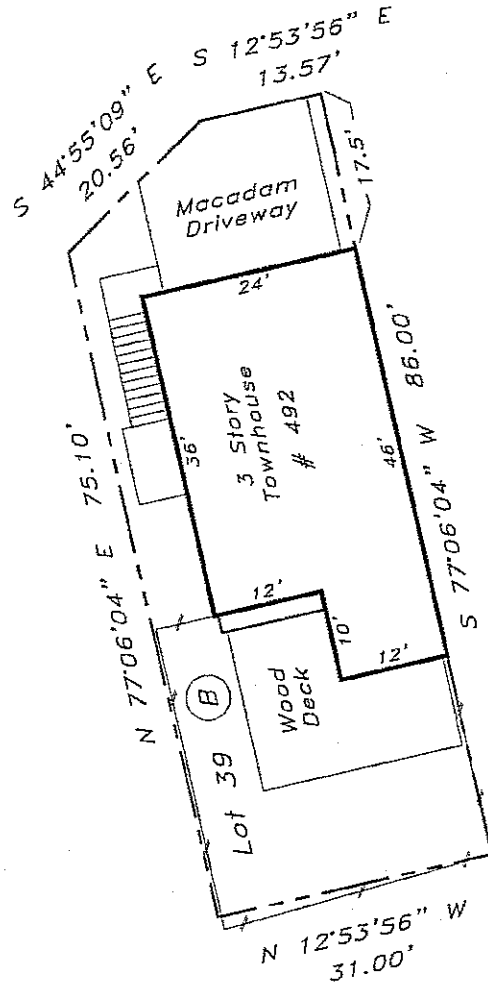
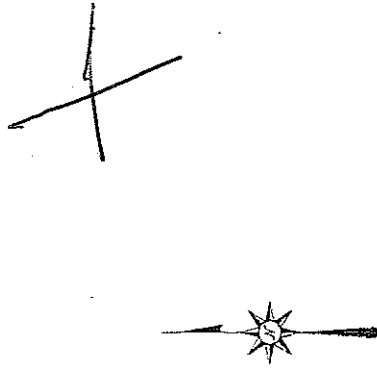
APPROVED - AUG 26, 1992
THE CITY OF ROCKVILLE PLANNING COMMISSION

APPROVED - AUG 26, 1992
THE CITY OF ROCKVILLE PLANNING COMMISSION

APPROVED - AUG 26, 1992
THE CITY OF ROCKVILLE PLANNING COMMISSION

NOTES:

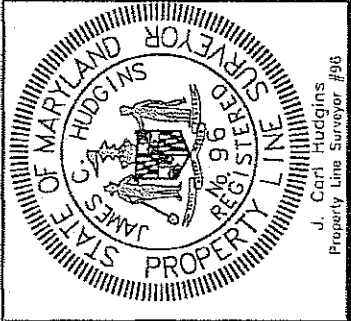
- 1) B.R.L. information, if shown, was obtained from existing record plat or local agencies and is not guaranteed by HTI, Inc.
- 2) Building line and/or Flood Zone information is subject to the interpretation of the originator.
- 3) HTI, Inc. does not certify to unknown or unrecorded encroachments or overlaps.
- 4) Property markers not found, or guaranteed by this location.
- 5) Sellenck distance accuracy: 1".



Subject property is shown in Zone C in the National Flood Insurance Program Flood Insurance Rate Map of Montgomery County, Maryland, Panel # 200 of 200 Community Panel # 240049-00 200 C Effective date: August 5, 1997

This is to certify that I have surveyed the property shown hereon, being known as **Lot 39 Block B 492 Winding Rose Drive** recorded in the Land Records of Montgomery County, Maryland in Plat Bk. 1887D Liber 20062 Folio 244 for the purpose of locating the improvements thereon.

- * This plat is of benefit to the consumer only insofar as it is required by a lender or a title insurance company or its agent in connection with contemplated transfer, financing, or refinancing purposes.
- * This plat is not to be relied upon for the establishment of location of fences, garages, buildings, or other existing or future structures.
- * This plat does not provide for the accurate identification of property boundary lines, but such identification may not be required for the transfer of title or for securing financing or refinancing.



J. Carl Hudgins
Property Line Surveyor #96

LOCATION DRAWING 492 Winding Rose Drive Rose Hill Falls Montgomery County, Maryland	
Scale:	1" = 20'
Date:	July 8, 2004
Field by:	JLM
Drawn by:	JLM
Drawing #:	HO44784G
NTT Associates, Inc. 16205 Old Frederick Road Mt. Airy, Maryland 21771 Ph. (410)442-2031 Fax No. (410)442-1315	



REAL PROPERTY CONSOLIDATED TAX BILL
LEVY YEAR 2008
ANNUAL BILL
TAX PERIOD 07/01/2008-06/30/2009

ACCOUNT NUMBER	BILL NO.	PROPERTY ADDRESS	MORTGAGE	OCCUPANCY
02932165	28261994	492 WINDING ROSE DR	CHASE HOME FINANCE LLC	PRINCIPAL RESIDENCE

PROPERTY DESCRIPTION	DASHOFF, BRAD & JAMIE
ROSE HILL FALLS	492 WINDING ROSE DR ROCKVILLE, MD 20850-2864

LOT	39	TAX DESCRIPTION	ASSESSMENT RATE	TAX/CHARGE
BLOCK	B	STATE PROPERTY TAX	574,122 .112*	643.02
DISTRICT	04	COUNTY PROPERTY TAX	574,122 .818*	4,696.32
SUB	274	ROCKVILLE PROPERTY TAX	574,122 .292*	1,676.44
CLASS	R050	SOLID WASTE CHARGE	30.25	30.25
REFUSE AREA	R40	TOTAL		7,046.03
REFUSE UNIT	1	CREDIT DESCRIPTION	ASSESSMENT RATE	AMOUNT
		STATE HOMESTEAD CREDIT	-52,675 .112*	-59.00
		COUNTY HOMESTEAD CREDIT	-52,675 .818*	-430.88
		COUNTY PROPERTY TAX CREDIT		-579.00
		MUNICIPAL HOMESTEAD CREDIT	-52,675 .292*	-153.81
		ROCKVILLE PROPERTY TAX CREDIT		-100.00
		TOTAL CREDITS		-1,322.69

PRIOR PAYMENTS **** 5723.34
 INTEREST
TOTAL AMOUNT 0
Amount Due by 6/30/2009 0

Printed on: Monday, June 08, 2009



**Real Property Estimated Tax and Other Non-tax Charges
a new owner will pay in the first full fiscal year of ownership**

ACCOUNT NUMBER:		02932165	
PROPERTY:	OWNER NAME	DASHOFF, BRAD & JAMIE	
	ADDRESS	492 WINDING ROSE DR ROCKVILLE, MD 20850-2864	
	TAX CLASS	50	
	REFUSE INFO	Refuse Area: R40 Refuse Unit: 1	
TAX INFORMATION:			
TAX DESCRIPTION	FY10 PHASE-IN VALUE₁	FY09 RATE₂	ESTIMATED FY10 TAX/CHARGE
STATE PROPERTY TAX	643,250	.112	720.44
COUNTY PROPERTY TAX ₃	643,250	.818	5,261.79
ROCKVILLE PROPERTY TAX	643,250	.292	1,878.29
SOLID WASTE CHARGE ₄		30.25	30.25
ESTIMATED TOTAL₆			7,890.77

BD / JD

1. Phase in value comes from the data base at the Maryland Department of Assessments and Taxation <http://www.dat.state.md.us/>, Real Property Data Search. The phase in value is for the next fiscal year, if available, otherwise the phase in value is for current fiscal year.
2. Tax rates come from the current property tax bill, which also may include several non-tax charges, at the web page of the County Government's Department of Finance: <http://www.montgomerycountymd.gov/finance>. Look for a link to "Pay or view your property tax bill on line".
3. County Property Tax is the sum of the General Fund tax and several special fund taxes.
4. All non-tax charges (for example Solid Waste, Water Quality Protection, Bay Restoration Fund, WSSC) are the charges in the current fiscal year. These charges may be different in the next fiscal year.
5. This property is located in an **existing** development district. Each year a special development district assessment must be paid. Effective every July 1st, the rate will change based on changes in the property assessment and debt service requirements. More information is available in the FAQ section of this website.
6. You must update the estimate for the property taxes and other non-tax charges
 - a. Every July 1, because the tax rates, phase-in values, and other non-tax charges will or may change; AND ALSO
 - b. In early January if the calculation used the phase-in value for the current fiscal year instead of the phase-in value for the next fiscal year, because SDAT had not yet specified the phase in value for the next fiscal year. This occurs in the period July 1 - early January in the third year of the three year assessment cycle.
7. This property is located in a **proposed** development district. At some date in the future, development district taxes may be levied to pay debt service on bonds issued to build infrastructure in the district. It is important that property owners recognize that this additional tax may be levied in the future. The rate indicated above is an estimate and will change once the district is created and bonds are issued. More information is available in the FAQ section of this website.
8. The Proposed Estimated Total includes all actual and proposed taxes and non-tax charges relative to this property.