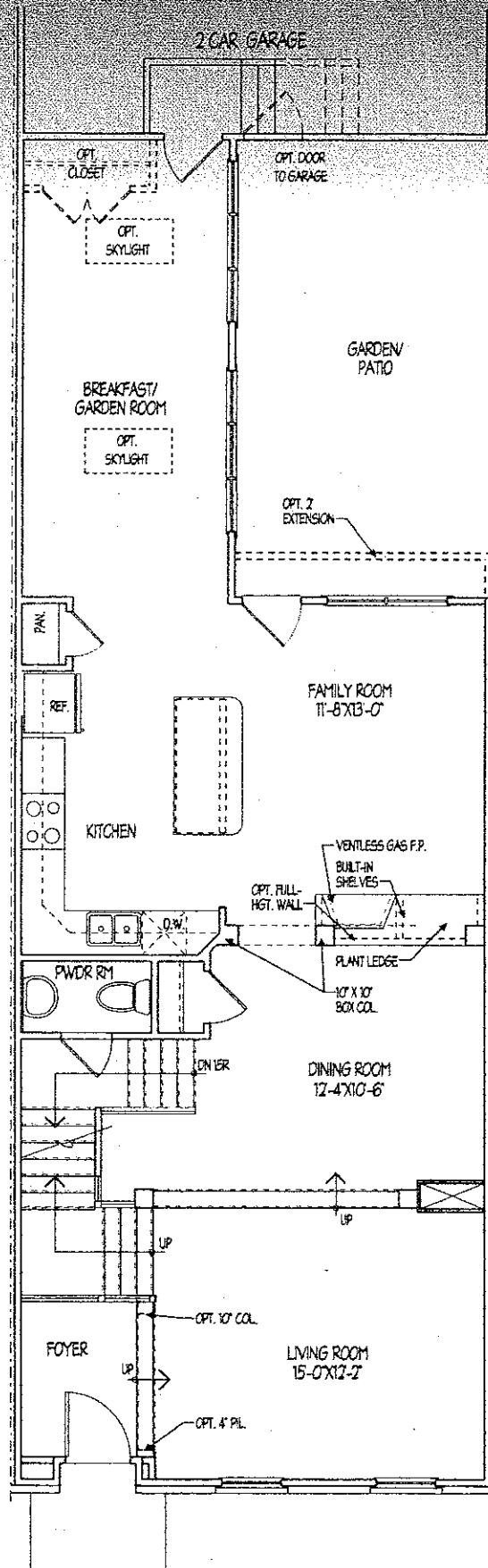
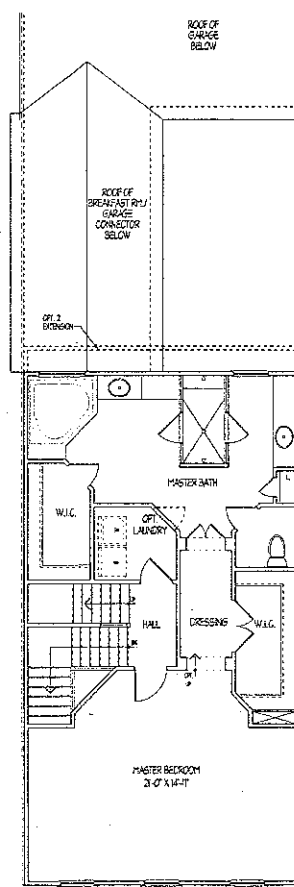
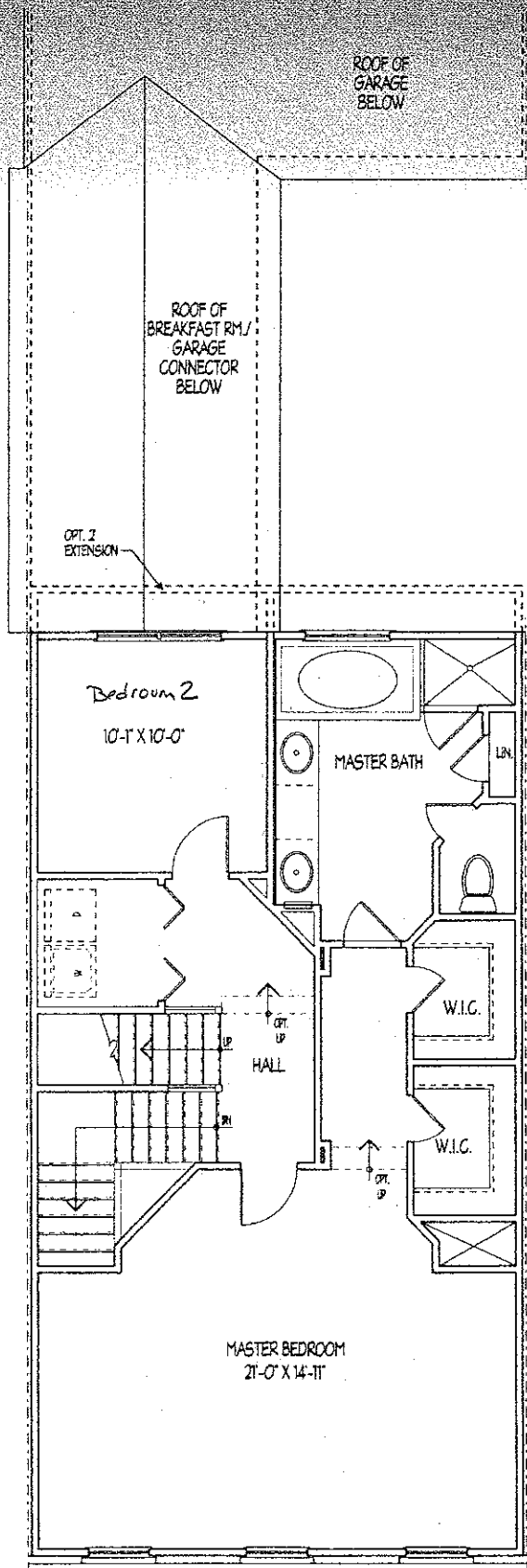


# First Floor

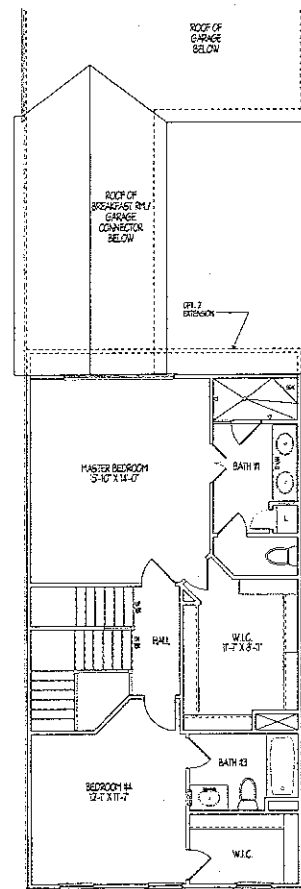


All dimensions are approximate and accuracy cannot be guaranteed.  
Plans vary by elevation. Plans subject to change without notice or obligation.

# Second Floor



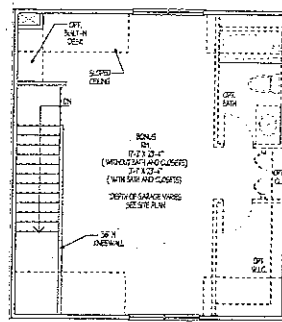
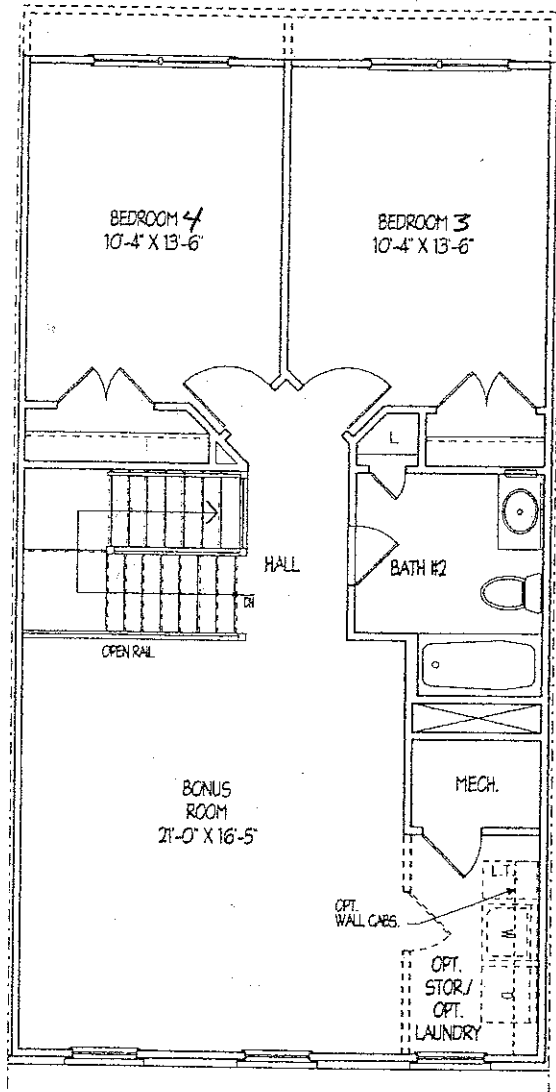
Alternate Second Floor Plan #1



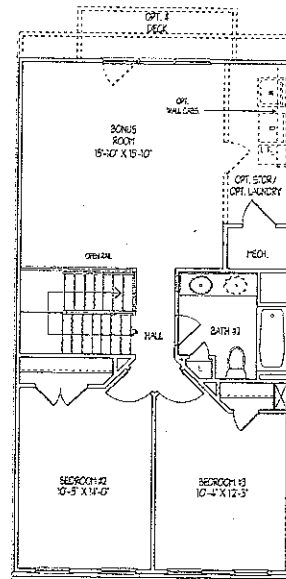
Alternate Second Floor Plan #2

All dimensions are approximate and accuracy cannot be guaranteed.  
Plans vary by elevation. Plans subject to change without notice or obligation.

# Third Floor



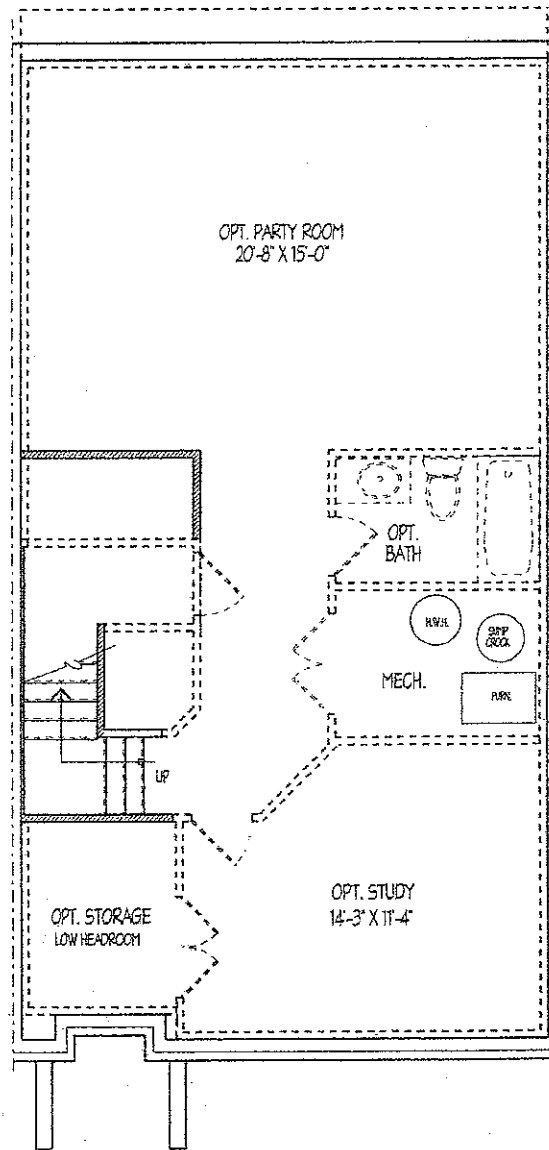
Optional Bonus Room Over Garage



Alternate Third Floor Plan

All dimensions are approximate and accuracy cannot be guaranteed.  
 Plans vary by elevation. Plans subject to change without notice or obligation.

# Basement



*In-ground basement (non-walkout) condition shown. All dimensions are approximate and accuracy cannot be guaranteed. Plans vary by elevation. Plans are subject to change without notice or obligation.*

# PLAT NO. 22086

AREA TABULATION	
2 PARCELS	15.916 AC. ±
32 LOTS	89,777 SQ. FT. ±
STREET DEDICATION	33,833 SQ. FT. ±
TOTAL BY THIS PLAT	135,219 SQ. FT. ±
	3.1042 AC. ±

## SURVEYOR'S CERTIFICATE

I hereby certify that the information above herein is true to the best of my knowledge and belief based on a subdivision of part of the lands covered by Field Farm Limited Partnership and Precincts Four Limited Partnership, as shown on the attached plat, and that the same are located in Lot 13146 at Block 108 along the Land Records of Montgomery County, Maryland.

Furner, Keady/Towle, L.L.C. has changed its name to King Farm Associates, L.L.C. as filed with the Secretary of State of Delaware on September 20, 2001.

All plat, once approved as described in the Owners Dedication herein, shall be set as delineated herein.

The TOTAL AREA of this plat of Subdivision, which includes 2 parcels and 32 lots is 135,219 square feet or 3.1042 acres of land of which 33,833 square feet is STREET DEDICATION.

December 12, 2001

Thomas J. Keady  
Professional Land Surveyor  
Maryland Registration No. 10888

1. Existing zoning is C-3. Development of this property is a Subdivision, Conversion plat, C-3-2002 and two approved Detailed Applications C-3-2002-027 and C-3-2002-028.

2. C-3-2002-027 and C-3-2002-028 are as shown on the attached plat, as well as Future District Applications C-3-2002-029, C-3-2002-030, C-3-2002-031, C-3-2002-032, C-3-2002-033, C-3-2002-034, C-3-2002-035, C-3-2002-036, C-3-2002-037, C-3-2002-038, C-3-2002-039, C-3-2002-040, C-3-2002-041, C-3-2002-042, C-3-2002-043, C-3-2002-044, C-3-2002-045, C-3-2002-046, C-3-2002-047, C-3-2002-048, C-3-2002-049, C-3-2002-050, C-3-2002-051, C-3-2002-052, C-3-2002-053, C-3-2002-054, C-3-2002-055, C-3-2002-056, C-3-2002-057, C-3-2002-058, C-3-2002-059, C-3-2002-060, C-3-2002-061, C-3-2002-062, C-3-2002-063, C-3-2002-064, C-3-2002-065, C-3-2002-066, C-3-2002-067, C-3-2002-068, C-3-2002-069, C-3-2002-070, C-3-2002-071, C-3-2002-072, C-3-2002-073, C-3-2002-074, C-3-2002-075, C-3-2002-076, C-3-2002-077, C-3-2002-078, C-3-2002-079, C-3-2002-080, C-3-2002-081, C-3-2002-082, C-3-2002-083, C-3-2002-084, C-3-2002-085, C-3-2002-086, C-3-2002-087, C-3-2002-088, C-3-2002-089, C-3-2002-090, C-3-2002-091, C-3-2002-092, C-3-2002-093, C-3-2002-094, C-3-2002-095, C-3-2002-096, C-3-2002-097, C-3-2002-098, C-3-2002-099, C-3-2002-100.

3. This plat is subject to private and/or public storm drain easements to be recorded among the Land Records of Montgomery County, Maryland.

4. Parcel AD Block N is shown hereon. It is to be conveyed to the King Farm Farm Conveyance, Inc. (KFFA) or other designated entity and utilized as an open space.

5. Parcel AD Block N is shown hereon. It is to be conveyed to the King Farm Farm Conveyance, Inc. (KFFA) or other designated entity and utilized as an open space.

6. Portions of Parcel AD, Block N shown on this plat may be conveyed to the King Farm Farm Conveyance, Inc. (KFFA) or other designated entity and utilized as an open space.

7. Portions of Parcel AD, Block N shown on this plat may be conveyed to the King Farm Farm Conveyance, Inc. (KFFA) or other designated entity and utilized as an open space.

8. Portions of Parcel AD, Block N shown on this plat may be conveyed to the King Farm Farm Conveyance, Inc. (KFFA) or other designated entity and utilized as an open space.

9. Portions of Parcel AD, Block N shown on this plat may be conveyed to the King Farm Farm Conveyance, Inc. (KFFA) or other designated entity and utilized as an open space.

10. Portions of Parcel AD, Block N shown on this plat may be conveyed to the King Farm Farm Conveyance, Inc. (KFFA) or other designated entity and utilized as an open space.

11. Portions of Parcel AD, Block N shown on this plat may be conveyed to the King Farm Farm Conveyance, Inc. (KFFA) or other designated entity and utilized as an open space.

12. Portions of Parcel AD, Block N shown on this plat may be conveyed to the King Farm Farm Conveyance, Inc. (KFFA) or other designated entity and utilized as an open space.

13. Portions of Parcel AD, Block N shown on this plat may be conveyed to the King Farm Farm Conveyance, Inc. (KFFA) or other designated entity and utilized as an open space.

14. Portions of Parcel AD, Block N shown on this plat may be conveyed to the King Farm Farm Conveyance, Inc. (KFFA) or other designated entity and utilized as an open space.

15. Portions of Parcel AD, Block N shown on this plat may be conveyed to the King Farm Farm Conveyance, Inc. (KFFA) or other designated entity and utilized as an open space.

16. Portions of Parcel AD, Block N shown on this plat may be conveyed to the King Farm Farm Conveyance, Inc. (KFFA) or other designated entity and utilized as an open space.

17. Portions of Parcel AD, Block N shown on this plat may be conveyed to the King Farm Farm Conveyance, Inc. (KFFA) or other designated entity and utilized as an open space.

18. Portions of Parcel AD, Block N shown on this plat may be conveyed to the King Farm Farm Conveyance, Inc. (KFFA) or other designated entity and utilized as an open space.

19. Portions of Parcel AD, Block N shown on this plat may be conveyed to the King Farm Farm Conveyance, Inc. (KFFA) or other designated entity and utilized as an open space.

20. Portions of Parcel AD, Block N shown on this plat may be conveyed to the King Farm Farm Conveyance, Inc. (KFFA) or other designated entity and utilized as an open space.

21. Portions of Parcel AD, Block N shown on this plat may be conveyed to the King Farm Farm Conveyance, Inc. (KFFA) or other designated entity and utilized as an open space.

22. Portions of Parcel AD, Block N shown on this plat may be conveyed to the King Farm Farm Conveyance, Inc. (KFFA) or other designated entity and utilized as an open space.

23. Portions of Parcel AD, Block N shown on this plat may be conveyed to the King Farm Farm Conveyance, Inc. (KFFA) or other designated entity and utilized as an open space.

24. Portions of Parcel AD, Block N shown on this plat may be conveyed to the King Farm Farm Conveyance, Inc. (KFFA) or other designated entity and utilized as an open space.

25. Portions of Parcel AD, Block N shown on this plat may be conveyed to the King Farm Farm Conveyance, Inc. (KFFA) or other designated entity and utilized as an open space.

## OWNER'S DEDICATION

There are no recorded sales, actions at law, liens, leases, mortgages or trusts affecting the property shown in this plat of subdivision, except certain recorded interests and encumbrances which have been indicated hereon.

12/13/01

King Farm Associates, L.L.C.  
Formerly Helios/L.L.C.  
Spartan Partners, L.L.C.

Matthew G. Kelly  
President

Matthew G. Kelly  
President

Matthew G. Kelly  
President

Matthew G. Kelly  
President

Matthew G. Kelly  
President

Matthew G. Kelly  
President

Matthew G. Kelly  
President

Matthew G. Kelly  
President

Matthew G. Kelly  
President

Matthew G. Kelly  
President

Matthew G. Kelly  
President

Matthew G. Kelly  
President

Matthew G. Kelly  
President

Matthew G. Kelly  
President

Matthew G. Kelly  
President

Matthew G. Kelly  
President

Matthew G. Kelly  
President

Matthew G. Kelly  
President

Matthew G. Kelly  
President

Matthew G. Kelly  
President

Matthew G. Kelly  
President

Matthew G. Kelly  
President

Matthew G. Kelly  
President

Matthew G. Kelly  
President

Matthew G. Kelly  
President

Matthew G. Kelly  
President

Matthew G. Kelly  
President

Matthew G. Kelly  
President

Matthew G. Kelly  
President

Matthew G. Kelly  
President

Matthew G. Kelly  
President

Matthew G. Kelly  
President

Matthew G. Kelly  
President

## OWNER'S DEDICATION

There are no recorded sales, actions at law, liens, leases, mortgages or trusts affecting the property shown in this plat of subdivision, except certain recorded interests and encumbrances which have been indicated hereon.

12/13/01

King Farm Associates, L.L.C.  
Formerly Helios/L.L.C.  
Spartan Partners, L.L.C.

Matthew G. Kelly  
President

Matthew G. Kelly  
President

Matthew G. Kelly  
President

Matthew G. Kelly  
President

Matthew G. Kelly  
President

Matthew G. Kelly  
President

Matthew G. Kelly  
President

Matthew G. Kelly  
President

Matthew G. Kelly  
President

Matthew G. Kelly  
President

Matthew G. Kelly  
President

Matthew G. Kelly  
President

Matthew G. Kelly  
President

Matthew G. Kelly  
President

Matthew G. Kelly  
President

Matthew G. Kelly  
President

Matthew G. Kelly  
President

Matthew G. Kelly  
President

Matthew G. Kelly  
President

Matthew G. Kelly  
President

Matthew G. Kelly  
President

Matthew G. Kelly  
President

Matthew G. Kelly  
President

Matthew G. Kelly  
President

Matthew G. Kelly  
President

Matthew G. Kelly  
President

Matthew G. Kelly  
President

Matthew G. Kelly  
President

Matthew G. Kelly  
President

Matthew G. Kelly  
President

Matthew G. Kelly  
President

Matthew G. Kelly  
President

Matthew G. Kelly  
President

## OWNER'S DEDICATION

There are no recorded sales, actions at law, liens, leases, mortgages or trusts affecting the property shown in this plat of subdivision, except certain recorded interests and encumbrances which have been indicated hereon.

12/13/01

King Farm Associates, L.L.C.  
Formerly Helios/L.L.C.  
Spartan Partners, L.L.C.

Matthew G. Kelly  
President

Matthew G. Kelly  
President

Matthew G. Kelly  
President

Matthew G. Kelly  
President

Matthew G. Kelly  
President

Matthew G. Kelly  
President

Matthew G. Kelly  
President

Matthew G. Kelly  
President

Matthew G. Kelly  
President

Matthew G. Kelly  
President

Matthew G. Kelly  
President

Matthew G. Kelly  
President

Matthew G. Kelly  
President

Matthew G. Kelly  
President

Matthew G. Kelly  
President

Matthew G. Kelly  
President

Matthew G. Kelly  
President

Matthew G. Kelly  
President

Matthew G. Kelly  
President

Matthew G. Kelly  
President

Matthew G. Kelly  
President

Matthew G. Kelly  
President

Matthew G. Kelly  
President

Matthew G. Kelly  
President

Matthew G. Kelly  
President

Matthew G. Kelly  
President

Matthew G. Kelly  
President

Matthew G. Kelly  
President

Matthew G. Kelly  
President

Matthew G. Kelly  
President

Matthew G. Kelly  
President

Matthew G. Kelly  
President

Matthew G. Kelly  
President

## OWNER'S DEDICATION

There are no recorded sales, actions at law, liens, leases, mortgages or trusts affecting the property shown in this plat of subdivision, except certain recorded interests and encumbrances which have been indicated hereon.

12/13/01

King Farm Associates, L.L.C.  
Formerly Helios/L.L.C.  
Spartan Partners, L.L.C.

Matthew G. Kelly  
President

Matthew G. Kelly  
President

Matthew G. Kelly  
President

Matthew G. Kelly  
President

Matthew G. Kelly  
President

Matthew G. Kelly  
President

Matthew G. Kelly  
President

Matthew G. Kelly  
President

Matthew G. Kelly  
President

Matthew G. Kelly  
President

Matthew G. Kelly  
President

Matthew G. Kelly  
President

Matthew G. Kelly  
President

Matthew G. Kelly  
President

Matthew G. Kelly  
President

Matthew G. Kelly  
President

Matthew G. Kelly  
President

Matthew G. Kelly  
President

Matthew G. Kelly  
President

Matthew G. Kelly  
President

Matthew G. Kelly  
President

Matthew G. Kelly  
President

Matthew G. Kelly  
President

Matthew G. Kelly  
President

Matthew G. Kelly  
President

Matthew G. Kelly  
President

Matthew G. Kelly  
President

Matthew G. Kelly  
President

Matthew G. Kelly  
President

Matthew G. Kelly  
President

Matthew G. Kelly  
President

Matthew G. Kelly  
President

Matthew G. Kelly  
President

## OWNER'S DEDICATION

There are no recorded sales, actions at law, liens, leases, mortgages or trusts affecting the property shown in this plat of subdivision, except certain recorded interests and encumbrances which have been indicated hereon.

12/13/01

King Farm Associates, L.L.C.  
Formerly Helios/L.L.C.  
Spartan Partners, L.L.C.

Matthew G. Kelly  
President

Matthew G. Kelly  
President

Matthew G. Kelly  
President

Matthew G. Kelly  
President

Matthew G. Kelly  
President

Matthew G. Kelly  
President

Matthew G. Kelly  
President

Matthew G. Kelly  
President

Matthew G. Kelly  
President

Matthew G. Kelly  
President

Matthew G. Kelly  
President

Matthew G. Kelly  
President

Matthew G. Kelly  
President

Matthew G. Kelly  
President

Matthew G. Kelly  
President

Matthew G. Kelly  
President

Matthew G. Kelly  
President

Matthew G. Kelly  
President

Matthew G. Kelly  
President

Matthew G. Kelly  
President

Matthew G. Kelly  
President

Matthew G. Kelly  
President

Matthew G. Kelly  
President

Matthew G. Kelly  
President

Matthew G. Kelly  
President

Matthew G. Kelly  
President

Matthew G. Kelly  
President

Matthew G. Kelly  
President

Matthew G. Kelly  
President

Matthew G. Kelly  
President

Matthew G. Kelly  
President

Matthew G. Kelly  
President

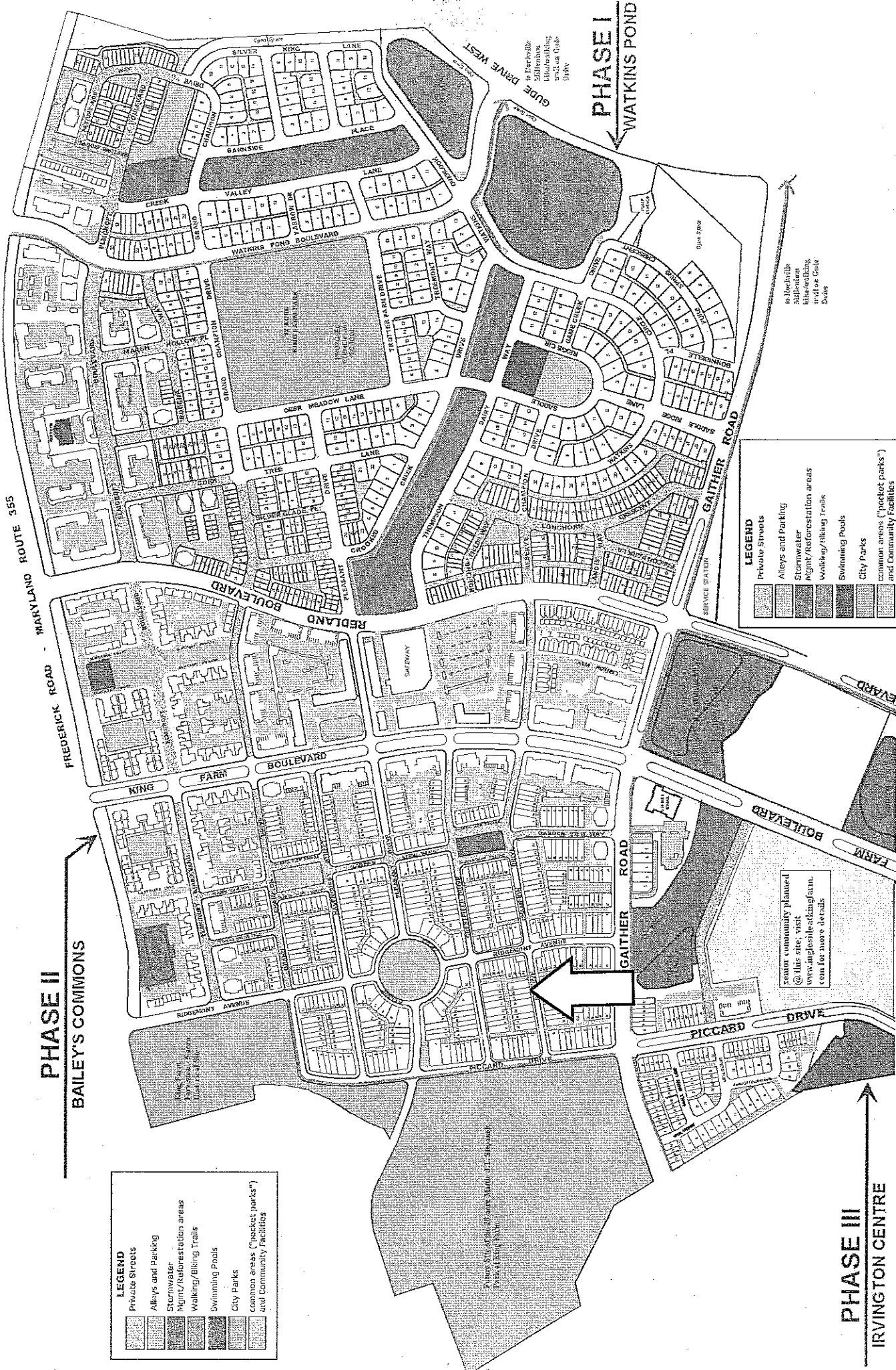
Matthew G. Kelly  
President

## OWNER'S DEDICATION

There are no recorded sales, actions at law, liens, leases, mortgages or trusts affecting the property shown in this plat of subdivision, except certain recorded interests and encumbrances which have been indicated hereon.

12/13/01

King Farm Associates, L.L.C.  
Formerly Helios/L.L.C.  
Spartan Partners, L



**PHASE I**  
WATKINS POND

**PHASE II**  
BAILEY'S COMMONS

**PHASE III**  
IRVINGTON CENTRE

**LEGEND**

- Private Streets
- Alleys and Parking
- Stormwater
- Plant/Reforestation areas
- Walking/Biking Trails
- Swimming Pools
- City Parks
- Common areas ("pocket parks") and Community Facilities

**LEGEND**

- Private Streets
- Alleys and Parking
- Stormwater
- Plant/Reforestation areas
- Walking/Biking Trails
- Swimming Pools
- City Parks
- Common areas ("pocket parks") and Community Facilities

Senior community planned @ this site, visit [www.angiesite-oftangram.com](http://www.angiesite-oftangram.com) for more details

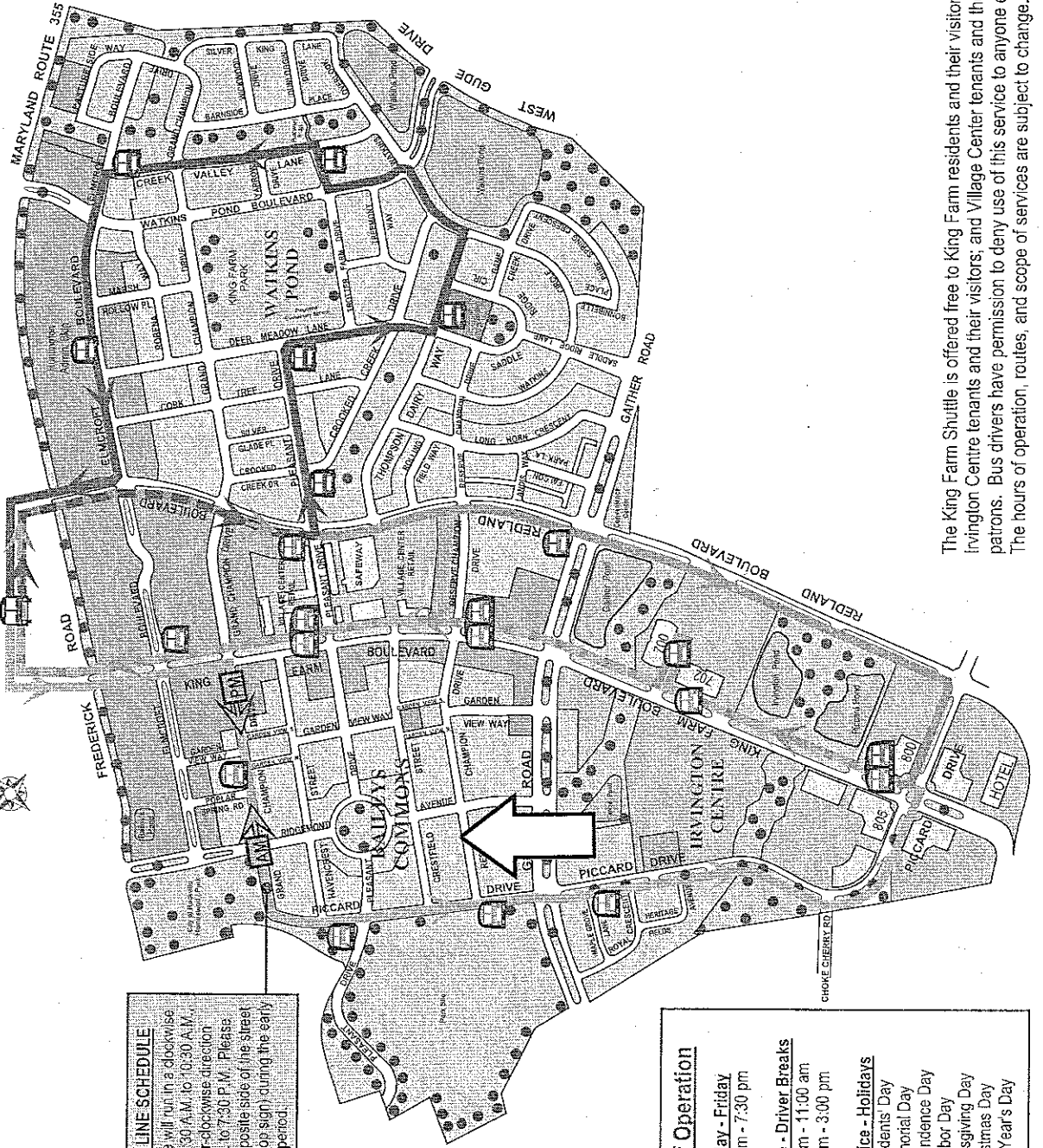
to be possible  
at this time  
subject to  
approval  
of the  
City

to be possible  
at this time  
subject to  
approval  
of the  
City

to be possible  
at this time  
subject to  
approval  
of the  
City

# Welcome to the KINGFARM SHUTTLE BUS

Continuous-loop Shuttle service through King Farm to the Shady Grove Metro



**ORANGE LINE SCHEDULE**  
 The Orange line will run in a clockwise direction from 6:30 A.M. to 10:30 A.M. and in a counter-clockwise direction from 11:00 A.M. to 7:30 P.M. Please stand on the opposite side of the street from the bus stop sign during the early A.M. clockwise period.

**Hours of Operation**  
**Monday - Friday**  
 6:30 am - 7:30 pm  
**No Service - Driver Breaks**  
 10:30 am - 11:00 am  
 2:30 pm - 3:00 pm  
**No Service - Holidays**  
 Presidents Day  
 Memorial Day  
 Independence Day  
 Labor Day  
 Thanksgiving Day  
 Christmas Day  
 New Year's Day

## BUS ROUTES and STOPS

### BLUE LINE

- Shady Grove Metro Station
- Redland Boulevard @ Pleasant Drive
- Gallher Road
- King Farm Boulevard @ 800-805 King Farm Blvd
- 700-702 King Farm Blvd
- Reserve Champion Drive
- Village Green Park
- Elmcroft Boulevard

### RED LINE

- Pleasant Drive @ Crooked Creek Drive
- Deer Meadow Lane
- Thompson Dairy Way @ Saddle Ridge Circle
- Trotter Farm Drive @ Creek Valley Lane
- Creek Valley Lane @ Elmcroft Boulevard
- Elmcroft Boulevard @ Huntington Admin. Bldg.
- Shady Grove Metro Station

### ORANGE LINE

- Grand Champion Drive @ Between Garden View Way and Poplar Spring Road
- Pleasant Drive
- Reserve Champion Drive
- Royal Crescent
- King Farm Boulevard @ 800-805 King Farm Blvd
- 702 King Farm Blvd
- Reserve Champion Drive
- Village Green Park
- Shady Grove Metro Station



Bus Stops  
 Buses are handicap accessible  
 Shuttle Bus Services operated by Veolia Transportation  
 Dispatcher: 703.256.4339

The King Farm Shuttle is offered free to King Farm residents and their visitors; Irvington Centre tenants and their visitors; and Village Center tenants and their patrons. Bus drivers have permission to deny use of this service to anyone else. The hours of operation, routes, and scope of services are subject to change.

